



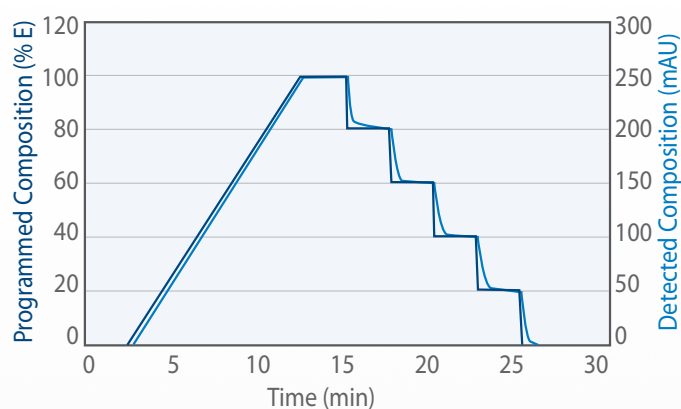
333/334 HPLC Pumps

Preparative chromatography delivery system

Capable of fast separations with high-efficiency columns in normal and reversed-phase modes. Choose the 333 Pump for isocratic applications or a 333/334 combination for binary gradient applications.



Gradient Linearity and Accuracy



Features & Benefits

- ▶ Capable of milligram-to-gram level mass-throughput per injection up to 15 g depending on column size and loading capacity at flow rates up to 200 mL/min.
- ▶ Integrated keypad control for stand-alone operation.
- ▶ Ability to operate additional pumps in parallel to double the flow rate up to 400 mL/min.
- ▶ Composition gradient with high-pressure mixing: 333/334 binary system (third pump for ternary); solvent selection on each pump with optional 4-solvent valve accommodating up to eight solvents.
- ▶ Quiet operation, durable design.
- ▶ Stackable to conserve bench space.
- ▶ Control 33X Pumps and an entire HPLC system via TRILUTION® LC Software.





333/334 HPLC Pumps

Applications

- Preparative scale purification of synthetic and biological compounds
- Preparative reversed-phase HPLC
- Normal-phase HPLC

333/334 HPLC Pumps	
Composition and Mixing	Increment: 0.1% Dwell volume: 3.7 mL, pressure independent Gradient linearity range: 1 – 98% B for 10 mL/min and higher
Flow Rate	Flow rate: 1 – 200 mL/min (3,040 psi) Accuracy: $\pm 1\%$ or 5.3 $\mu\text{L}/\text{min}$ Repeatability: RSD $< 0.5\%$ or 2.7 $\mu\text{L}/\text{min}$ Selectable units: L/hr and mL/min Adjustment increment: 0.01 mL/min Minimum adjustment value: 20 $\mu\text{L}/\text{min}$
Pump Options	333: Single-solvent master pump (w/control panel), 0.2 – 200 mL/min, 21 MPa (3,040 psi) 333/334: 2-solvent pumping system, 2 – 200 mL/min, 21 MPa (3,040 psi) 334: 3-solvent, remote controlled pump, 2 – 200 mL/min, 21 MPa (3,040 psi)
Pressure	Nominal range: 0.5 MPa (5 bar, 70 psi) to 21 MPa (210 bar, 3,040 psi)
Front Panel (333 Pump)	25 functional keys, including six soft keys
Display Panel (333 Pump)	40-character, 8-line display, adjustable contrast and screen saver
Liquid Contact Materials	316 L stainless steel, titanium, FEP, PTFE, PCTFE, ETFE, PEEK, UHMWPE, ruby and ceramics
Manufacturing Standards	Meets applicable safety and EMC certification standards; UL and CE certified
Software Control	TRILUTION® LC Software
Power Requirements	Frequency: 50 - 60 Hz Voltage: 90 - 120 or 220 - 260V; main voltage fluctuations not to exceed $\pm 10\%$ of the nominal voltage
Weight	34 kg (75 lb)
Dimensions (w x d x h)	333: 26 x 41 x 51 cm (10.2 x 16.2 x 20.1 in) 334: 26 x 41 x 39 cm (10.2 x 16.2 x 15.3 in)

Product #s:

- 38103331 (333, H3 primary solvent, dual-piston, reciprocating master pump)
- 38103341 (334, H3 secondary solvent, dual-piston, reciprocating remote-controlled pump)

Gilson, Inc. | P.O. Box 620027 | Middleton, WI 53562-0027, USA | Tel: 608-836-1551 or 800-445-7661 | Fax: 608-831-4451
Gilson S.A.S. | 19, avenue des Entrepreneurs | BP 145, F-95400 VILLIERS LE BEL, FRANCE
www.gilson.com | sales@gilson.com | service@gilson.com | training@gilson.com

©2012 Gilson, Inc. | LT303043-04 | Specifications subject to change without notice.



Gilson, Inc. | 800-445-7661 | www.gilson.com