



Clinical Evidence*

Pathogen	Pass	Test	Test conditions	Contact time	Log reduction
<i>Pseudomonas aeruginosa</i>	✓	EN 13727	Dirty/Clean	1 min	6.26
	✓	EN 1276	Dirty/Clean	1 min	6.30
<i>Escherichia coli</i>	✓	EN 1276	Dirty/Clean	1 min	6.22
<i>Staphylococcus aureus</i>	✓	EN 13727	Dirty/Clean	1 min	6.39
	✓	EN 1276	Dirty/Clean	1 min	6.34
<i>Enterococcus hirae</i>	✓	EN 13727	Dirty/Clean	1 min	6.21
	✓	EN 1276	Dirty/Clean	1 min	6.20
MRSA	✓	EN 13727	Dirty/Clean	1 min	6.29
<i>Candida albicans</i>	✓	EN 13624	Dirty/Clean	2 min	5.27
	✓	EN 1650	Dirty/Clean	2 min	5.27
<i>Aspergillus niger</i>	✓	EN 13624	Dirty	15 min	5.19
	✓	EN 13624	Clean	2 min	4.28
	✓	EN 1650	Dirty	2 min	4.07
	✓	EN 1650	Clean	2 min	4.29



Disinfectant wipes & sprays

AZOWIPE™

70% ISOPROPYL ALCOHOL DISINFECTANT
FOR CLINICAL SURFACES AND NON-INVASIVE MEDICAL
DEVICES & EQUIPMENT

AZOWIPES are impregnated with the highest grade of 70% isopropyl alcohol and blended with 0.2 micron deionised water. AZOWIPES have been designed to provide effective and rapid disinfection. The quick-drying formula will leave the surfaces thoroughly disinfected, with no residue. AZOWIPES have been fully validated and are clinically proven to be effective against a broad range of micro-organisms including bacteria, enveloped viruses, fungi and yeast.

The wipes are designed for professional use in clinical areas such as casualty departments, operating theatres, GP and dental surgeries, laboratories, cleanrooms and other areas where infection prevention and control is a prime requirement.

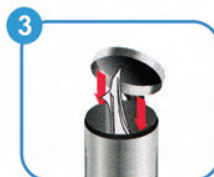
Instructions for use



Remove wipe from the canister and close the lid to prevent drying out. Wipe over the surface to be disinfected.



If using AZO™ Spray - spray onto the cleaned surface and wipe or leave to dry.



Once used, discard the wipe into appropriate waste container.



Do not mix with any other chemicals. Do not use one wipe on more than one piece of equipment. Ensure the surface or a piece of equipment is clean prior to disinfection. Keep the canister/spray bottle closed. Store upright in a cool dry place, away from sources of ignition. For professional use only.



Code	Product name	Product description	Size (mm)	Wipes qty	Case qty
81103	AZOWIPE™	70% IPA disinfectant wipes for hard surfaces – canister	220x200	200	12
AZ250W	AZOWIPE™ NEW	70% IPA disinfectant wipes for hard surfaces – canister	180x200	250	12
81104	AZO™ WIPETTE	70% IPA disinfectant wipes for hard surfaces – canister	130x180	100	12
AZ150W	AZO™ WIPETTE NEW	70% IPA disinfectant wipes for hard surfaces – canister	130x180	150	12
81110	AZOWIPE™ BLUE	70% IPA, blue coloured disinfectant wipes - canister	200x200	200	12
81123	AZOWIPE™ STERILE SINGLE BAGGED	70% IPA disinfectant wipes; gamma irradiated, sealed and sterilised in a single polythene bag - canister	200x220	200	12
81148	AZOWIPE™ STERILE DOUBLE BAGGED	70% IPA disinfectant wipes; gamma irradiated, sealed and sterilised in double polythene bags - canister	200x220	200	12
81160	AZOWIPE™ STERILE TRIPLE BAGGED	70% IPA disinfectant wipes; gamma irradiated, sealed and sterilised in triple polythene bags - canister	200x220	200	12
81138	AZOWIPE™ EQUIPMENT CE	70% IPA disinfectant wipes for non-invasive medical devices; CE mark – canister	200x200	200	12
81120	AZO™ SPRAY	70% IPA disinfectant spray for universal use – bottle	500ml	N/A	12