

Gilson Extraction Solutions

Trusted sample preparation begins with trusted extraction methods



SPEC SHEET | EXTRACTION

ASPEC® POSITIVE PRESSURE MANIFOLD

MAKE YOUR LAB LIFE EASIER

The ASPEC® Positive Pressure Manifold for solid phase extraction (SPE) provides uniform and consistent flow rate control for the cleanup of low or high viscosity samples, improving reproducibility and recovery.

FLEXIBLE TO YOUR SCIENCE

Compatible with 1 mL, 3 mL, 6 mL tabbed or tabless cartridges and 96-well plates, the ASPEC Manifold will fit to your SPE research needs.

GET THE MOST FROM YOUR INVESTMENT

A cost-effective approach to automation for clinical, forensic, and food and beverage testing laboratories. It is also an ideal choice for SPE cleanup prior to LC-MS for bioanalysis.



Figure 1

ASPEC® Positive Pressure Manifold



Figure 2

ASPEC® Manifold Control Unit Front Panel

BENEFIT FROM MORE SAMPLE CONTROL

The ASPEC Manifold offers more control among samples and between runs over traditional vacuum manifolds, providing greater confidence in the data generated.

- **Easy to set up and use:** Only one gas source at even low pressure. No training is required to operate.
- **Reproducible extractions:** Positive pressure fine regulators improve flow control, and thus, reproducibility.
- **Parallel extractions:** Increase daily throughput by accelerating sample cleanup and reducing time spent in front of the instrument.

ASPEC® POSITIVE PRESSURE MANIFOLD SPECIFICATIONS

Site Requirements	Environment: Indoor use only. Set unit inside a hood whenever possible with approximately 5 cm free space above and behind.
Liquid Contact Materials	Inert Gas Supply: Maximum pressure of 15 psi. Use with 1/4 in. (OD) tubing.
Physical Specifications	Gasket: Neoprene Locator Plate: Ertalyte
	Weight: 14.54 kg (32 lbs.)
	Dimensions (W x D x H): 33 cm x 48.3 cm x 44.2 cm (13 in. x 19 in. x 17.4 in.)



ASPEC® SPE Cartridges

ASPEC® CARTRIDGES

ASPEC® SPE sorbents are available in 1, 3, and 6 mL cartridges and in microplate formats. These cost effective, high-quality silica and polymer cartridges come in a variety of phases including *Silica*, *C18*, *SCX*, *WCX*, *HLB*, *mixed modes* and many others.

- **Consistent analyte recoveries**
- **High lot-to-lot reproducibility**



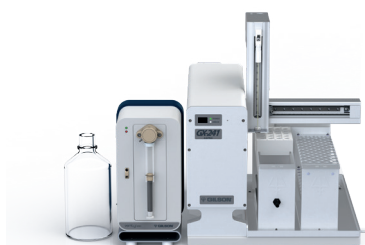
PLATEMASTER®, DISTRIMAN®, and MICROMAN® E

RELATED SOLUTIONS

Complement your ASPEC Manifold with Gilson pipetting solutions. The dispenser DISTRIMAN® provides accurate, multi-dispensing of solvents into SPE cartridges, while MICROMAN® positive displacement pipettes offer precise distribution of viscous samples. The PLATEMASTER® provides 96-well reproducible pipetting, greatly improving the throughput when working with 96-well SPE plates.

- **Accurate sample and solvent volumes**
- **High throughput workflow**

LEARN MORE ABOUT ASPEC® SPE SOLUTIONS AT [GILSON.COM](http://gilson.com)



GX-241 ASPEC® System



GX-271 ASPEC® System



GX-274 ASPEC® System

www.gilson.com/ContactUs

LT350018-01